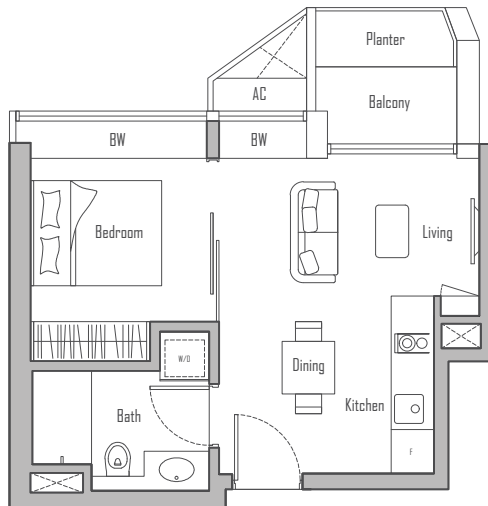


# 1 - BEDROOM



## TYPE A1

45 sqm / 484 sqft

#09-17 to #23-17

#25-17 to #33-17



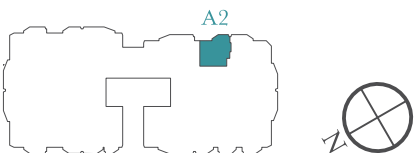
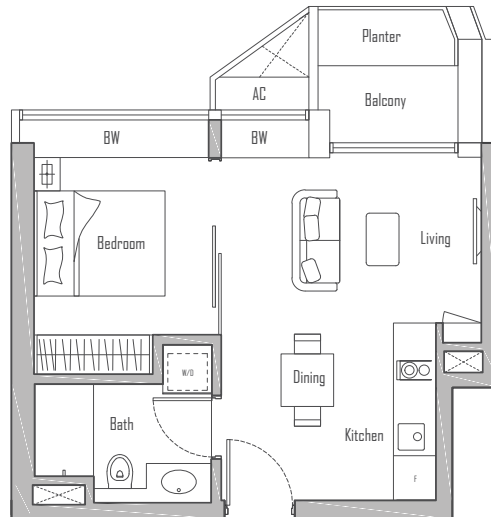
# 1 - BEDROOM

---

## TYPE A2

47 sqm / 506 sqft

#36-17 to #51-17



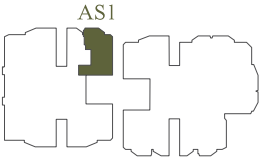
# 1 - BEDROOM + STUDY



## TYPE AS1

67 sqm / 721 sqft

#09-11 to #23-11  
#25-11 to #33-11



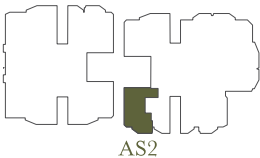
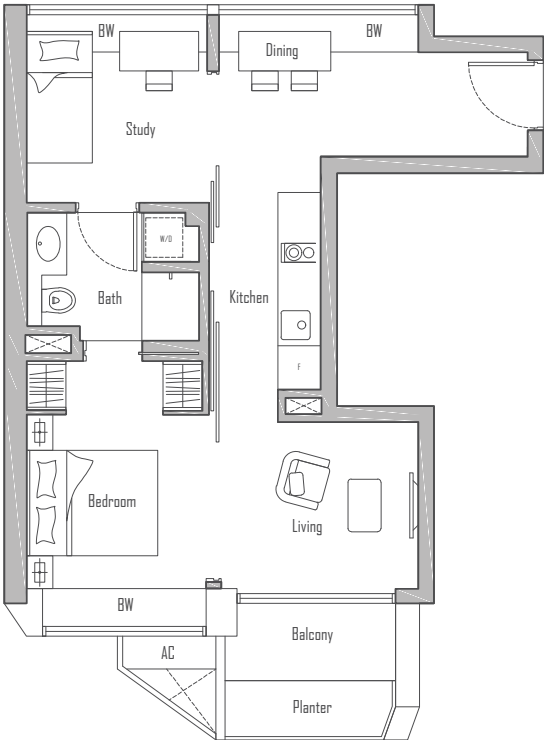
Plans are not drawn to scale and are subject to amendments as may be required or approved by the relevant authorities. All floor areas are approximate and subject to final survey.

# 1 - BEDROOM + STUDY

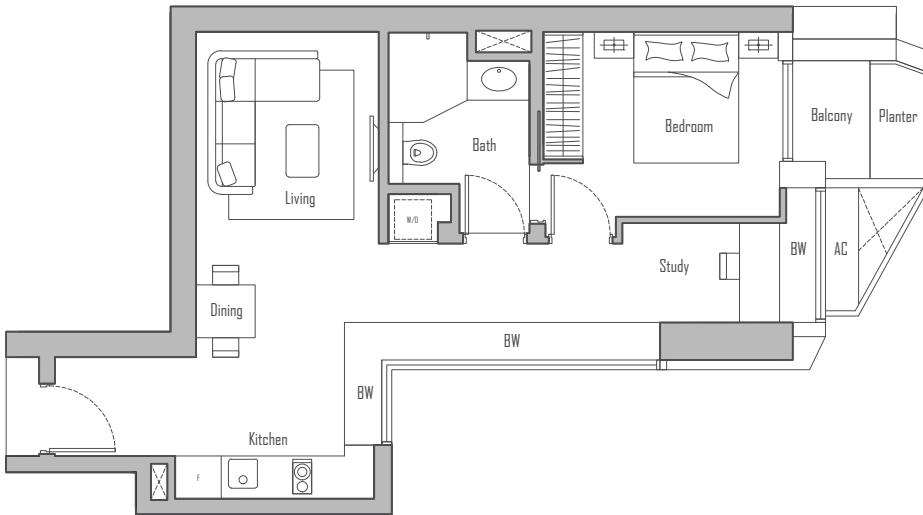
## TYPE AS2

64 sqm / 689 sqft

#09-22 to #23-22  
#25-22 to #33-22



# 1 - BEDROOM + STUDY



## TYPE AS3

69 sqm / 743 sqft

#09-19 to #23-19

#25-19 to #33-19

